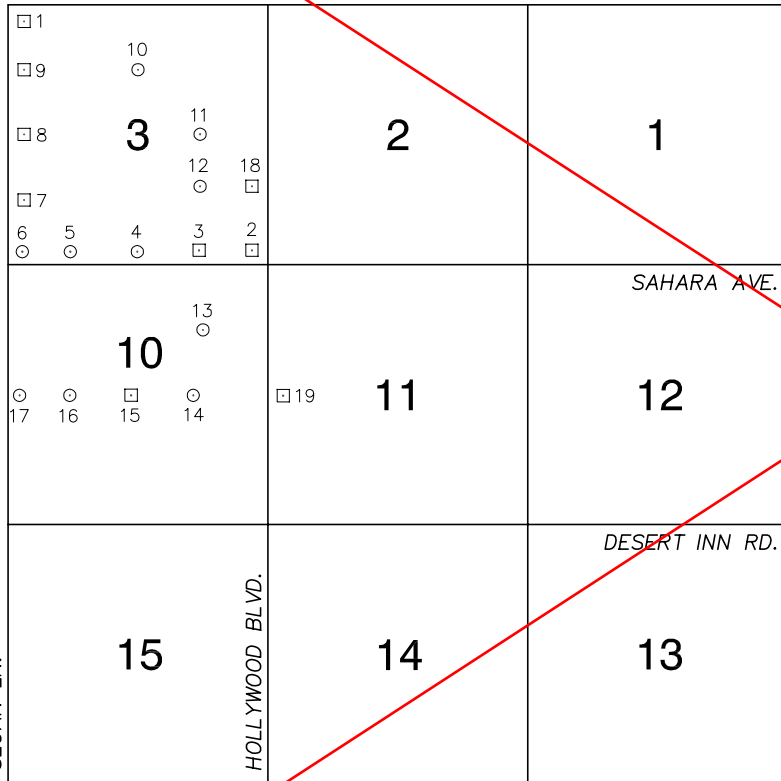


FOR REFERENCE ONLY

*2018 BENCHMARK NETWORK ADJUSTMENT SUPERSEDES THE 2003 BENCHMARK BOOK

Township 21 South, Range 62 East
Northeast Quarter

CHARLESTON BLVD.



SLOAN LN.

NORTH AMERICAN VERTICAL
DATUM OF 1988

- ALL ELEVATIONS IN METERS -

No.	STATION	ELEVATION (METERS)		DESCRIPTION
1	4C12 3NWS	528.076	F N D	RIVET AND SQUARE ALUMINUM PLATE IN TOP OF CURB, SOUTHEAST CORNER OF CHARLESTON BLVD. AND SLOAN LN. NEAR THE PC OF CHARLESTON BLVD.
2	4C12 3SES	535.987	F N D	RIVET AND SQUARE ALUMINUM PLATE IN TOP OF CURB, NORTHWEST CORNER OF SAHARA AVE. AND HOLLYWOOD BLVD. NEAR THE PC OF HOLLYWOOD BLVD.
3	4C12 3SSE6	528.065	F N D	RIVET AND SQUARE ALUMINUM PLATE IN TOP OF CURB, NORTHEAST CORNER OF SAHARA AVE. AND TREE LINE DR. NEAR THE PC OF TREE LINE DR.
4	8C12 3S4 1998	520.008	S E T	RIVET AND ROUND ALUMINUM PLATE IN TOP OF CURB, NORTHWEST CORNER OF SAHARA AVE. AND ORCHARD VALLEY DR. NEAR THE PC OF SAHARA AVE.
5	8C12 3SSW6 1998	520.342	S E T	RIVET AND ROUND ALUMINUM PLATE IN TOP OF CURB, NORTH SIDE OF SAHARA AVE. AT LAS VEGAS WASH EAST CORNER OF BRIDGE WALL.
6	8C12 3SWS 1998	521.810	S E T	RIVET AND ROUND ALUMINUM PLATE IN TOP OF CURB, NORTHEAST CORNER OF SAHARA AVE. AND SLOAN LN. NEAR THE PC OF SAHARA AVE.
7	4C12 3SWW6	523.173	F N D	RIVET AND SQUARE ALUMINUM PLATE IN TOP OF CURB, SOUTHEAST CORNER OF COMMODORE COVE DR. AND SLOAN LN. NEAR THE PC OF SLOAN LN.
8	4C12 3W4	524.655	F N D	RIVET AND SQUARE ALUMINUM PLATE IN TOP OF CURB, SOUTHEAST CORNER OF EMERALD CANYON DR. AND SLOAN LN. NEAR THE PC OF SLOAN LN.
9	4C12 3NWW6	526.222	F N D	RIVET AND SQUARE ALUMINUM PLATE IN TOP OF CURB, NORTHEAST CORNER OF WHISPERING PINE AVE. AND SLOAN LN. NEAR THE PC OF SLOAN LN.
10	8C12 3N6 1998	524.987	S E T	RIVET AND ROUND ALUMINUM PLATE IN TOP OF CURB, EAST SIDE OF TREE LINE DR. NEAR THE ALIGNMENT OF GRAPE BLOSSOM DR.
11	8C12 3E6 1998	523.807	S E T	RIVET AND ROUND ALUMINUM PLATE IN TOP OF CURB, NORTHEAST CORNER OF TREE LINE DR. AND AMERICAN BEAUTY AVE. NEAR THE PC OF TREE LINE DR.

CLARK COUNTY VERTICAL CONTROL v.2003

CLARK COUNTY SURVEYOR'S OFFICE
5051 SOUTH PARADISE ROAD
LAS VEGAS, NEVADA 89119
(702) 455-0640

CONVERSION FACTOR:

METERS X $\left(\frac{3937}{1200}\right)$ = U.S. SURVEY FEET

REVISED 2003

SHEET
1 OF 2

21-62
NE

FOR REFERENCE ONLY

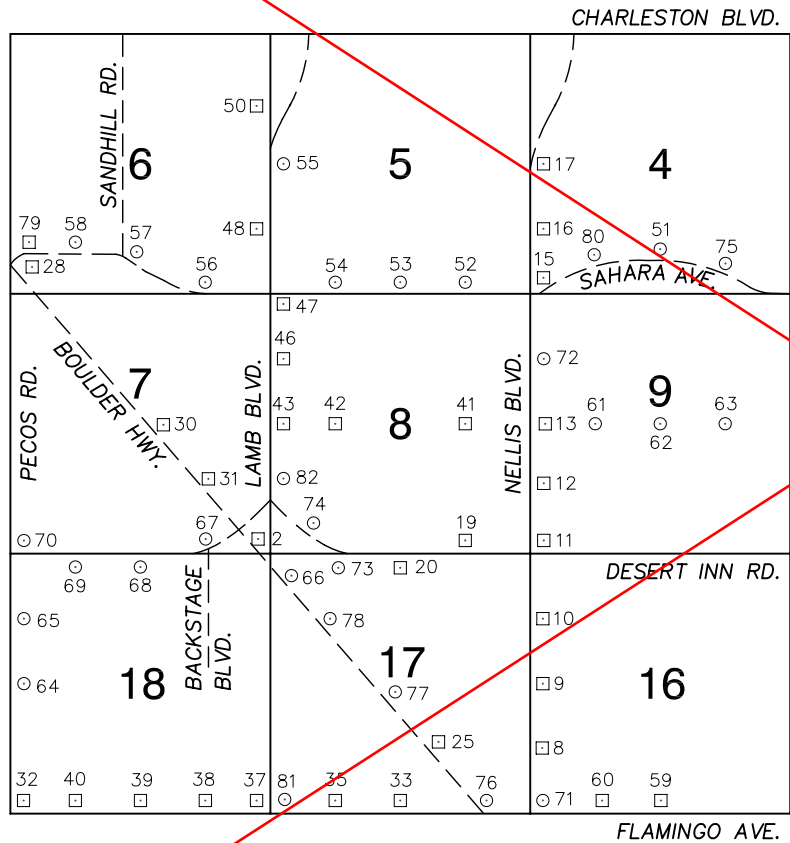
***2018 BENCHMARK NETWORK ADJUSTMENT SUPERSEDES THE 2003 BENCHMARK BOOK**

No.	STATION	ELEVATION (METERS)		DESCRIPTION	No.	STATION	ELEVATION (METERS)		DESCRIPTION
12	8C12 3SE6 1998	526.686	S E T	RIVET AND ROUND ALUMINUM PLATE IN TOP OF CURB, NORTHEAST CORNER OF TREE LINE DR. AND WILDCAT WAY NEAR THE PC OF TREE LINE DR.	25				
13	8C12 10NE6 1998	522.455	S E T	RIVET AND ROUND ALUMINUM PLATE IN A CONCRETE MONUMENT, WEST SIDE OF TREE LINE DR. NEAR THE ALIGNMENT OF KAREN AVE. 1' NORTH OF THE NORTHEAST CORNER OF NEVADA POWER FENCE CORNER.	26				
14	8C12 10E6 1998	517.984	S E T	RIVET AND ROUND ALUMINUM PLATE IN A CONCRETE HEADWALL, NORTH SIDE OF VEGAS VALLEY DR. AT THE ENTRANCE TO A NEVADA POWER STATION, 260' WEST OF TREE LINE DR. ALIGNMENT.	27				
15	4C12 10C4	516.875	F N D	RIVET AND SQUARE ALUMINUM PLATE IN TOP OF CURB, SOUTH SIDE OF VEGAS VALLEY DR. ON THE EAST CORNER OF A BRIDGE STRUCTURE.	28				
16	8C12 10W6 1998	518.552	S E T	RIVET AND ROUND ALUMINUM PLATE IN TOP OF CURB, NORTH SIDE OF VEGAS VALLEY DR. 1300' EAST OF SLOAN LN. ALIGNMENT.	29				
17	8C12 10W4 1998	520.474	S E T	RIVET AND ROUND ALUMINUM PLATE IN TOP OF CURB, NORTH SIDE OF VEGAS VALLEY DR. NEAR THE SLOAN LN. ALIGNMENT.	30				
18	4C12 3SEE6	538.053	F N D	RIVET AND SQUARE ALUMINUM PLATE IN TOP OF CURB, SOUTHWEST CORNER OF HOLLYWOOD BLVD. AND WILDCAT WAY, NEAR THE PC OF HOLLYWOOD BLVD.	31				
19	4C12 11W4	532.163	F N D	RIVET AND SQUARE ALUMINUM PLATE IN A CONCRETE WATER BACKFLOW VALVE PAD. NORTHEAST CORNER OF VEGAS VALLEY DR. AND HOLLYWOOD BLVD. 50' NORTH AND 75' EAST OF INTERSECTION.	32				
20					33				
21					34				
22					35				
23					CLARK COUNTY VERTICAL CONTROL v.2003				
24					CLARK COUNTY SURVEYOR'S OFFICE 5051 SOUTH PARADISE ROAD LAS VEGAS, NEVADA 89119 (702) 455-0640			CONVERSION FACTOR: METERS X $\left(\frac{3937}{1200}\right)$ = U.S. SURVEY FEET	
					REVISED 2003	SHEET 2 OF 2	21-62 NE		

FOR REFERENCE ONLY

***2018 BENCHMARK NETWORK ADJUSTMENT SUPERSEDES THE 2003 BENCHMARK BOOK**

**Township 21 South, Range 62 East
Northwest Quarter**



NORTH AMERICAN VERTICAL
DATUM OF 1988
- ALL ELEVATIONS IN METERS -

No.	STATION	ELEVATION (METERS)	DESCRIPTION
1			LOST 2003
2	6C12 7SES	550.131	F N D RIVET AND SQUARE ALUMINUM PLATE IN LIGHT POLE BASE SOUTHEAST CORNER OF BOULDER HWY. AND LAMB BLVD.
3			LOST 2003
4			LOST 2003
5			LOST 2003
6			LOST 2003
7			LOST 2003
8	6C12 16SWW6	519.835	F N D RIVET AND SQUARE ALUMINUM PLATE IN TOP OF CURB, NORTHEAST CORNER OF NELLIS BLVD. AND THE ENTRANCE TO 3890 NELLIS BLVD. (HOLIDAY TRAVEL PARK) NEAR THE PC OF NELLIS BLVD.
9	6C12 16W4	521.002	F N D RIVET AND SQUARE ALUMINUM PLATE IN TOP OF CURB, NORTHEAST CORNER OF NELLIS BLVD. AND TWAIN AVE. NEAR THE PC OF NELLIS BLVD.
10	6C12 16NWW6	522.497	F N D RIVET AND SQUARE ALUMINUM PLATE IN TOP OF CURB, EAST SIDE OF NELLIS BLVD. AT VISTA FLORA WAY ALIGNMENT.
11	6C12 9SWS	524.149	F N D RIVET AND SQUARE ALUMINUM PLATE IN TOP OF CURB, NORTHEAST CORNER OF NELLIS BLVD. AND DESERT INN RD. JUST NORTH OF A LIGHT POLE.

CLARK COUNTY VERTICAL CONTROL v.2003

CLARK COUNTY SURVEYOR'S OFFICE
5051 SOUTH PARADISE ROAD
LAS VEGAS, NEVADA 89119
(702) 455-0640

CONVERSION FACTOR:
METERS X $\left(\frac{3937}{1200}\right)$ = U.S. SURVEY FEET

REVISED
02/14/2005

SHEET
1 OF 4

21-62
NW

FOR REFERENCE ONLY

***2018 BENCHMARK NETWORK ADJUSTMENT SUPERSEDES THE 2003 BENCHMARK BOOK**

No.	STATION	ELEVATION (METERS)	DESCRIPTION	No.	STATION	ELEVATION (METERS)	DESCRIPTION	
12	6C12 9SWW6	525.205	F N D RIVET AND SQUARE ALUMINUM PLATE IN TOP OF CURB, NORTHEAST CORNER OF NELLIS BLVD. AND HAPPY VALLEY DR.	25	6C12 17SE6	529.197	F N D RIVET AND SQUARE ALUMINUM PLATE IN TOP OF CURB, NORTHEAST CORNER OF BOULDER HWY. AND THE ENTRANCE TO THE ROAD RUNNER TRAVEL PARK NEAR THE PC OF BOULDER HWY.	
13	6C12 9W4	525.151	F N D RIVET AND SQUARE ALUMINUM PLATE IN TOP OF CURB, NORTHEAST CORNER OF NELLIS BLVD. AND VEGAS VALLEY DR. NEAR THE PC OF NELLIS BLVD.	26			LOST 2003	
14			LOST 2003	27			LOST 2003	
15	6C12 4SWS	527.604	F N D RIVET AND SQUARE ALUMINUM PLATE IN TOP OF CURB, NORTHEAST CORNER OF NELLIS BLVD. AND SAHARA AVE. NEAR THE PC OF NELLIS BLVD.	28	6C12 6SWS	555.361	F N D RIVET AND SQUARE ALUMINUM PLATE IN TOP OF CURB, NORTH OF GLEN AVE. AND EAST OF BOULDER HWY. NEAR THE PC OF BOULDER HWY. AT 3465 BOULDER HWY.	
16	6C12 4SWW6	528.582	F N D RIVET AND SQUARE ALUMINUM PLATE IN TOP OF CURB, NORTHEAST CORNER OF NELLIS BLVD. AND BOSTON AVE.	29			LOST 2003	
17	6C12 4W4	529.046	F N D RIVET AND SQUARE ALUMINUM PLATE IN TOP OF CURB, NORTHEAST CORNER OF NELLIS BLVD. AND WYOMING AVE. NEAR THE PC OF NELLIS BLVD.	30	6C12 7C4	553.861	F N D RIVET AND SQUARE ALUMINUM PLATE IN TOP OF CURB, EAST SIDE OF BOULDER HWY. AT NORTH PROPERTY LINE OF 3745 BOULDER HWY. AT PROJECTED CENTERLINE OF SANDHILL RD.	
18			LOST 2003	31	6C12 7SE6	550.950	F N D RIVET AND SQUARE ALUMINUM PLATE IN TOP OF CURB, EAST SIDE OF BOULDER HWY. AT THE PC OF ON-RAMP U.S. 93-95.	
19	6C12 8SSE6	525.243	F N D RIVET AND SQUARE ALUMINUM PLATE IN TOP OF CURB, NORTHEAST CORNER OF DESERT INN RD. AND ALOHA ST. /VISTA DEL NORTE NEAR THE PC OF DESERT INN RD.	32	6C12 18SWS	577.678	F N D RIVET AND SQUARE ALUMINUM PLATE IN TOP OF CURB, NORTHEAST CORNER OF PECOS RD. AND FLAMINGO RD. NEAR THE PC OF PECOS RD.	
20	6C12 17N4	533.250	F N D RIVET AND SQUARE ALUMINUM PLATE IN TOP OF CURB, SOUTHEAST CORNER OF DESERT INN RD. AND MOUNTAIN VISTA ST. NEAR THE PC OF DESERT INN RD.	33	7C12 17S4	530.282	F N D RIVET AND SQUARE ALUMINUM PLATE IN TOP OF CURB, NORTHEAST CORNER OF FLAMINGO RD. AND MOUNTAIN VISTA ST. NEAR THE PC FLAMINGO RD.	
21			LOST 2003	34			LOST 2003	
22			LOST 2003	35	7C12 17SSW6	540.492	F N D RIVET AND SQUARE ALUMINUM PLATE IN TOP OF CURB, NORTHEAST CORNER OF FLAMINGO RD. AND SEVILLE ST.	
23			LOST 2003	CLARK COUNTY VERTICAL CONTROL v.2003				
24			LOST 2003	CLARK COUNTY SURVEYOR'S OFFICE 5051 SOUTH PARADISE ROAD LAS VEGAS, NEVADA 89119 (702) 455-0640				
				CONVERSION FACTOR: METERS X $\left(\frac{3937}{1200}\right)$ = U.S. SURVEY FEET				
				REVISED 02/14/2005		SHEET 2 OF 4		21-62 NW

FOR REFERENCE ONLY

*2018 BENCHMARK NETWORK ADJUSTMENT SUPERSEDES THE 2003 BENCHMARK BOOK

No.	STATION	ELEVATION (METERS)	DESCRIPTION	No.	STATION	ELEVATION (METERS)	DESCRIPTION
36			LOST 2003	49			LOST 2003
37	7C12 18SES	560.518	F N D RIVET AND SQUARE ALUMINUM PLATE IN TOP OF CURB, NORTHWEST CORNER OF FLAMINGO RD. AND HAZELCREST ST. AT FREEWAY EXIT, SOUTH AND EAST BOUND, NEAR THE PC OF FLAMINGO RD.	50	7C12 6NEE6	535.122	F N D RIVET AND SQUARE ALUMINUM PLATE IN TOP OF CURB, NORTHWEST CORNER OF OLIVE ST. AND BROADALBIN DR. NEAR THE PC OF BROADALBIN DR.
38	7C12 18SSE6	564.035	F N D RIVET AND SQUARE ALUMINUM PLATE IN TOP OF CURB, NORTHWEST CORNER OF FLAMINGO RD. AND ANNIE OAKLEY DR. - BROADGATE LANE, NEAR THE PC OF FLAMINGO RD.	51	8C12 4S4 1998	524.767	S E T RIVET AND ROUND ALUMINUM PLATE IN TOP OF CURB, NORTHWEST CORNER OF SAHARA AVE. AND WINTERWOOD BLVD. NEAR THE PC OF SAHARA AVE.
39	7C12 18S4	572.600	F N D RIVET AND SQUARE ALUMINUM PLATE IN TOP OF CURB, NORTHWEST CORNER OF FLAMINGO RD. AND SANDHILL RD. NEAR THE PC OF FLAMINGO RD.	52	8C12 5SSE6 1998	529.606	S E T RIVET AND ROUND ALUMINUM PLATE IN TOP OF CURB, NORTHWEST CORNER OF SAHARA AVE. AND LAMONT ST. NEAR THE PC OF SAHARA AVE.
40	7C12 18SSW6	576.274	F N D RIVET AND SQUARE ALUMINUM PLATE IN TOP OF CURB, NORTHWEST CORNER OF FLAMINGO RD. AND PEARL ST. NEAR THE PC OF FLAMINGO RD.	53	8C12 5S4 1998	531.746	S E T RIVET AND ROUND ALUMINUM PLATE IN TOP OF CURB, NORTHWEST CORNER OF SAHARA AVE. AND ARDEN AVE. NEAR THE PC OF SAHARA AVE.
41	7C12 8E6	526.780	F N D RIVET AND SQUARE ALUMINUM PLATE IN TOP OF CURB, NORTH SIDE OF VEGAS VALLEY DR. AT ALOHA ST. ALIGNMENT.	54	8C12 5SSW6 1998	536.408	S E T RIVET AND ROUND ALUMINUM PLATE IN TOP OF CURB, NORTHWEST CORNER OF SAHARA AVE. AND MARION AVE. NEAR THE PC OF SAHARA AVE.
42	7C12 8W6	538.456	F N D RIVET AND SQUARE ALUMINUM PLATE IN TOP OF CURB, NORTHWEST CORNER OF VEGAS VALLEY DR. AND MARION ST. NEAR THE PC OF VEGAS VALLEY DR.	55	8C12 5W4 1998	536.513	S E T RIVET AND ROUND ALUMINUM PLATE IN TOP OF CURB, NORTHWEST CORNER OF LAMB BLVD. AND WYOMING AVE. NEAR THE PC OF LAMB BLVD.
43	7C12 8W4	543.703	F N D RIVET AND SQUARE ALUMINUM PLATE IN TOP OF CURB, NORTHWEST CORNER OF VEGAS VALLEY DR. AND LAMB BLVD. NEAR THE PC OF VEGAS VALLEY DR.	56	8C12 6SSE6 1998	543.106	S E T RIVET AND ROUND ALUMINUM PLATE IN TOP OF CURB, NORTHWEST CORNER OF SAHARA AVE. AND WALNUT RD. NEAR THE PC OF SAHARA AVE.
44			LOST 2003	57	8C12 6S4 1998	544.437	S E T RIVET AND ROUND ALUMINUM PLATE IN TOP OF CURB, NORTHWEST CORNER OF SAHARA AVE. AND SANDHILL RD. NEAR THE PC OF SAHARA AVE.
45			LOST 2003	58	8C12 6SSW6 1998	551.394	S E T RIVET AND ROUND ALUMINUM PLATE IN TOP OF CURB, NORTHWEST CORNER OF SAHARA AVE. IN LINE WITH THE WEST PROPERTY LINE OF 3655 EAST SAHARA AVE. (SAHARA GLEN APTS.) NEAR P.P.# (P80414).
46	7C12 8NWW6	542.369	F N D RIVET AND SQUARE ALUMINUM PLATE IN TOP OF CURB, NORTHWEST CORNER OF LAMB BLVD. AND KAREN AVE. NEAR THE P.C. OF LAMB BLVD.	59	4C12 16S4	515.251	F N D RIVET AND SQUARE ALUMINUM PLATE IN TOP OF CURB, NORTHWEST CORNER OF FLAMINGO RD. AND CABANA DR. NEAR THE PC OF CABANA DR.
47	7C12 8NWS	540.638	F N D RIVET AND SQUARE ALUMINUM PLATE IN TOP OF CURB, SOUTHWEST CORNER OF LAMB BLVD. AND SAHARA AVE. NEAR THE P.C. OF LAMB BLVD.	CLARK COUNTY VERTICAL CONTROL v.2003			
48	7C12 6SEE6	537.892	F N D RIVET AND SQUARE ALUMINUM PLATE IN TOP OF CURB, WEST SIDE OF LAMB BLVD. NORTH OF PATTERSON AVE. ALIGNMENT.	CLARK COUNTY SURVEYOR'S OFFICE 5051 SOUTH PARADISE ROAD LAS VEGAS, NEVADA 89119 (702) 455-0640			CONVERSION FACTOR: METERS X $\left(\frac{3937}{1200}\right)$ = U.S. SURVEY FEET
			REVISED 2003	SHEET 3 OF 4	21-62 NW		

FOR REFERENCE ONLY

***2018 BENCHMARK NETWORK ADJUSTMENT SUPERSEDES THE 2003 BENCHMARK BOOK**

No.	STATION	ELEVATION (METERS)	DESCRIPTION	No.	STATION	ELEVATION (METERS)	DESCRIPTION		
60	4C12 16SSW6	516.339	F N D RIVET AND SQUARE ALUMINUM PLATE IN TOP OF CURB, NORTH SIDE OF FLAMINGO RD. 50' WEST OF VAN ST.	73	8C12 17NNW6 1998	542.047	S E T RIVET AND ROUND ALUMINUM PLATE IN TOP OF CURB, SOUTH SIDE OF DESERT INN RD. NEAR THE ALIGNMENT OF FERNDALE ST.		
61	8C12 9W6 1998	523.235	S E T RIVET AND ROUND ALUMINUM PLATE IN TOP OF CURB, NORTHEAST CORNER OF VEGAS VALLEY DR. AND JUNIPER HILLS DR. NEAR THE PC OF VEGAS VALLEY DR.	74	8C12 8SWS 1998	548.409	S E T RIVET AND ROUND ALUMINUM PLATE IN TOP OF CURB, EAST SIDE OF DESERT INN RD. NEAR THE ALIGNMENT OF MAYORGA ST. NEAR 4278 DESERT INN RD.		
62	8C12 9C4 1998	522.116	S E T RIVET AND ROUND ALUMINUM PLATE IN TOP OF CURB, NORTH SIDE OF VEGAS VALLEY DR. NEAR THE ALIGNMENT OF CABANA DR.	75	8C12 4SSE6 1998	527.082	S E T RIVET AND ROUND ALUMINUM PLATE IN TOP OF CURB, NORTH SIDE OF SAHARA AT THE OVERPASS FOR THE WINTERWOOD GOLF COURSE, ON THE EAST SIDE OF THE BRIDGE.		
63	8C12 9E6 1998	521.060	S E T RIVET AND ROUND ALUMINUM PLATE IN TOP OF CURB, NORTH SIDE OF VEGAS VALLEY DR. 500' EAST OF GREEN TREE AVE.	76	7C12 17SES 1997	522.227	S E T RIVET AND ROUND ALUMINUM PLATE IN TOP OF CURB, NORTHEAST CORNER OF FLAMINGO RD. AND BOULDER HWY. NEAR THE PC OF BOULDER HWY.		
64	8C12 18W4 1998	572.576	S E T RIVET AND ROUND ALUMINUM PLATE IN TOP OF CURB, NORTHEAST CORNER OF PECOS RD. AND TWAIN AVE. NEAR THE PC OF PECOS RD.	77	7C12 17C4 1997	534.401	S E T RIVET AND ROUND ALUMINUM PLATE IN TOP OF CURB, NORTHEAST CORNER OF BOULDER HWY. AND INDIOS AVE. NEAR THE PC OF BOULDER HWY.		
65	8C12 18NWW6 1998	567.628	S E T RIVET AND ROUND ALUMINUM PLATE IN TOP OF CURB, NORTHEAST CORNER OF PECOS RD. AND HAVERFORD AVE. NEAR THE PC OF PECOS RD.	78	7C12 17NW6 1997	541.977	S E T RIVET AND ROUND ALUMINUM PLATE IN TOP OF CURB, EAST SIDE OF BOULDER HWY. NORTH SIDE OF THE MAIN ENTRANCE TO SUNRISE RV PARK (4445 BOULDER HWY.)		
66	7C12 17NWS 1997	545.832	S E T RIVET AND ROUND ALUMINUM PLATE IN TOP OF CURB, SOUTHEAST SIDE OF BOULDER HWY. AND THE ENTRANCE TO THE KOA CAMPGROUND, (4315 BOULDER HWY.)	79	7C12 6SWS	553.913	F N D RIVET AND SQUARE ALUMINUM PLATE IN TOP OF CURB, NORTHEAST CORNER OF SAHARA AVE. AND PALM RD. NEAR THE PC OF SAHARA AVE.		
67	8C12 7SSE6 1998	552.086	S E T RIVET AND ROUND ALUMINUM PLATE IN TOP OF CURB, NORTH SIDE OF DESERT INN RD. NEAR THE ALIGNMENT OF BACKSTAGE BLVD. NEAR P.P.#(60994).	80	8C12 4SSW6 1998	525.200	S E T RIVET AND ROUND ALUMINUM PLATE IN TOP OF CURB, NORTH SIDE OF SAHARA AVE. AT TEE ST. ALIGNMENT.		
68	8C12 18N4 1998	557.000	S E T RIVET AND ROUND ALUMINUM PLATE IN TOP OF CURB, SOUTHEAST CORNER OF DESERT INN RD. AND SANDHILL RD. NEAR THE PC OF DESERT INN RD.	81	8C12 17SWS 1998	550.688	S E T RIVET AND ROUND ALUMINUM PLATE IN TOP OF CURB, NORTH SIDE OF FLAMINGO RD. ON AN ISLAND, NEAR THE ENTRANCE TO NORTH BOUND 515-95		
69	8C12 18NNW6 1998	562.339	S E T RIVET AND ROUND ALUMINUM PLATE IN TOP OF CURB, SOUTHEAST CORNER OF DESERT INN RD. AND WAYNE ST. NEAR THE PC OF DESERT INN RD.	82	8C12 8SWW6 1998	546.864	S E T RIVET AND ROUND ALUMINUM PLATE IN TOP OF CURB, NORTHEAST CORNER OF LAMB BLVD. AND RIDGEDALE AVE. NEAR THE PC OF RIDGEDALE AVE.		
70	8C12 7SWS 1998	568.428	S E T RIVET AND ROUND ALUMINUM PLATE IN TOP OF CURB, NORTHEAST CORNER OF DESERT INN RD. AND PECOS RD. NEAR THE PC OF DESERT INN RD.	83					
71	7C12 16SWS 1997	519.455	S E T RIVET AND ROUND ALUMINUM PLATE IN TOP OF CURB, NORTHEAST CORNER OF NELLIS BLVD. AND FLAMINGO RD. NEAR THE PC OF NELLIS BLVD.	CLARK COUNTY VERTICAL CONTROL v.2003					
72	7C12 9NWW6 1997	527.186	S E T RIVET AND ROUND ALUMINUM PLATE IN TOP OF CURB, NORTHEAST CORNER OF NELLIS BLVD. AND SPYGLASS HILL DR. NEAR THE PC OF NELLIS BLVD.	CLARK COUNTY SURVEYOR'S OFFICE 5051 SOUTH PARADISE ROAD LAS VEGAS, NEVADA 89119 (702) 455-0640			CONVERSION FACTOR: METERS X $\left(\frac{3937}{1200}\right)$ = U.S. SURVEY FEET		
							REVISED 2003	SHEET 4 OF 4	21-62 NW

FOR REFERENCE ONLY

***2018 BENCHMARK NETWORK ADJUSTMENT SUPERSEDES THE 2003 BENCHMARK BOOK**

	No.	STATION	ELEVATION (METERS)	F N D	DESCRIPTION
<p>Township 21 South, Range 62 East Southeast Quarter</p>	1	6C12 27NW6	506.738	F N D	RIVET AND SQUARE ALUMINUM PLATE IN TOP OF CURB, NORTHEAST CORNER OF BOULDER HWY. AND WHITNEY AVE. NEAR THE PC OF BOULDER HWY.
	2	6C12 27W6	506.070	F N D	RIVET AND SQUARE ALUMINUM PLATE IN TOP OF CURB, BETWEEN 5947 AND 5959 BOULDER HWY. NEAR THE SOUTH END OF BUS STOP.
	3	V 51 1942	504.781	F N D	USC&GS BRASS CAP IN A CONCRETE MONUMENT, EAST OF BOULDER HWY. SOUTH OF HAMILTON AVE. IN FRONT OF 6101 BOULDER HWY. 5' NORTHEAST OF PP# 15162NP STAMPED "V51 RESET 1942".
	4	6C12 27S6	502.313	F N D	RIVET AND SQUARE ALUMINUM PLATE IN TOP OF CURB, SOUTHEAST CORNER OF BOULDER HWY. AND DESERT HORIZON DR. NEAR THE HALF DELTA OF THE ENTRANCE TO 6201 BOULDER HWY.
	5	6C12 34NNE6	500.007	F N D	RIVET AND SQUARE ALUMINUM PLATE IN TOP OF CURB, NORTH CORNER OF CONCRETE HEADWALL, SOUTHEAST CORNER OF BOULDER HWY. AND RUSSELL RD.
	6				LOST 2003
	7	6C12 35NWW6	499.797	F N D	RIVET AND SQUARE ALUMINUM PLATE IN TOP OF CURB, EAST SIDE OF HOLLYWOOD BLVD. 0.2 MILES SOUTH OF RUSSELL RD., SOUTHWEST CORNER OF SILVER BOWL PARK, NORTH SIDE OF PARKING LOT.
	8				LOST 2003
	9	6C12 35W6	502.160	F N D	RIVET AND SQUARE ALUMINUM PLATE IN A CONCRETE HEADWALL, EAST SIDE OF BOULDER HWY., 225' SOUTH OF 6760 BOULDER HWY.
	10	6C12 35S6	502.468	F N D	RIVET AND SQUARE ALUMINUM PLATE AT NORTH CORNER OF TOP OF HEADWALL. EAST SIDE OF BOULDER HWY. 600' NORTH OF SKYFOREST DR.
	11				LOST 2003
CLARK COUNTY VERTICAL CONTROL v.2003					
NORTH AMERICAN VERTICAL DATUM OF 1988 - ALL ELEVATIONS IN METERS -			CLARK COUNTY SURVEYOR'S OFFICE 5051 SOUTH PARADISE ROAD LAS VEGAS, NEVADA 89119 (702) 455-0640		CONVERSION FACTOR: METERS X $\left(\frac{3937}{1200}\right)$ = U.S. SURVEY FEET
			REVISED 2003	SHEET 1 OF 2	21-62 SE

FOR REFERENCE ONLY

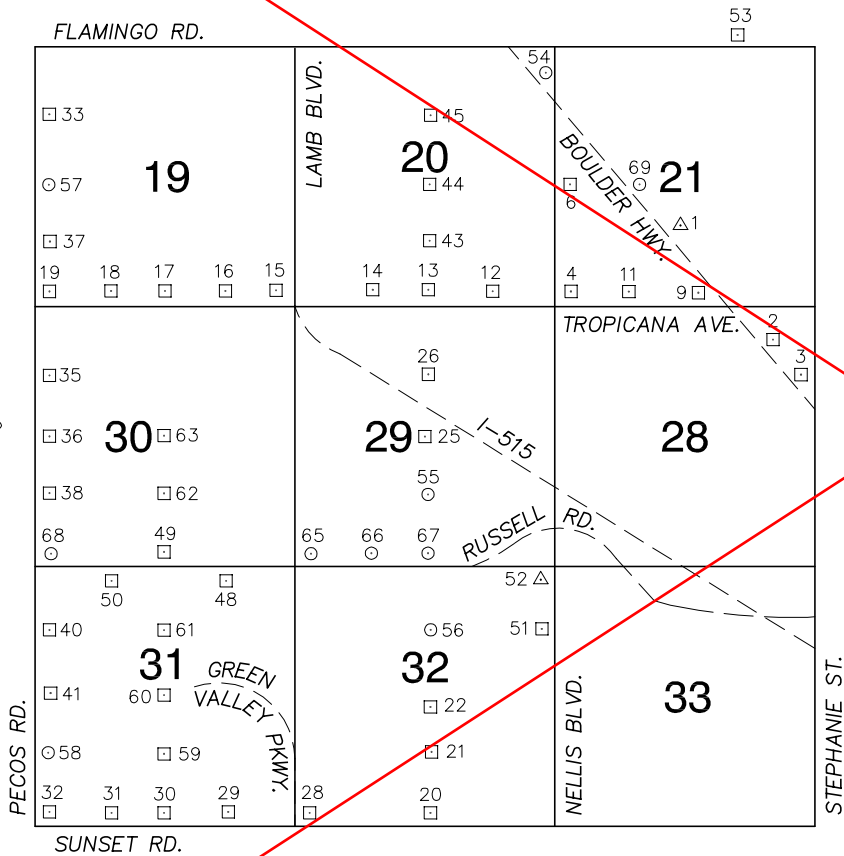
***2018 BENCHMARK NETWORK ADJUSTMENT SUPERSEDES THE 2003 BENCHMARK BOOK**

No.	STATION	ELEVATION (METERS)	DESCRIPTION	No.	STATION	ELEVATION (METERS)	DESCRIPTION
12	8C12 35N4 1998	493.730	S E T RIVET AND ROUND ALUMINUM PLATE IN TOP OF CURB, SOUTHWEST CORNER OF RUSSELL RD. AND REBEL RD. IN A CULVERT HEADWALL.	25			
13	8C12 26S6 1998	491.831	S E T RIVET AND ROUND ALUMINUM PLATE IN TOP OF CONCRETE GUARD RAIL, EAST SIDE OF REBEL RD. 200' NORTH OF THE SAM BOYD STADIUM NORTH ENTRANCE.	26			
14	8C12 26C4 1998	492.324	S E T RIVET AND ROUND ALUMINUM PLATE IN TOP OF CONCRETE GUARD RAIL, EAST SIDE OF REBEL RD. NEAR THE ENTRANCE TO THE WHITNEY LIFT STATION.	27			
15	8C12 22SSE6 1998	503.620	S E T RIVET AND ROUND ALUMINUM PLATE IN TOP OF CURB, NORTHEAST CORNER OF TROPICANA AVE. AND HOLLYWOOD BLVD. NEAR THE PC OF TROPICANA AVE.	28			
16	8C12 22S4 1998	503.903	S E T RIVET AND ROUND ALUMINUM PLATE IN TOP OF CURB, NORTH SIDE OF TROPICANA AVE. NEAR THE ALIGNMENT OF STEPTOE ST.	29			
17	8C12 22SWS 1998	506.474	S E T RIVET AND ROUND ALUMINUM PLATE IN TOP OF CURB, NORTHEAST CORNER OF TROPICANA AVE. AND STEPHANIE ST. NEAR THE PC OF TROPICANA AVE.	30			
18	4C12 22W4	507.913	F N D RIVET AND SQUARE ALUMINUM PLATE IN TOP OF CURB, SOUTHEAST CORNER OF STEPHANIE ST. AND JIMMY DURANTE BLVD. NEAR THE PC STEPHANIE ST.	31			
19	8C12 22NWW6 1998	511.086	S E T RIVET AND ROUND ALUMINUM PLATE IN A CONCRETE MONUMENT, NORTHEAST CORNER OF STEPHANIE ST. AND ROCHELLE AVE.	32			
20	8C12 22NWS 1998	512.504	S E T RIVET AND ROUND ALUMINUM PLATE IN TOP OF CURB, NORTHEAST CORNER OF FLAMINGO RD. AND STEPHANIE ST. NEAR THE PC OF STEPHANIE ST.	33			
21	8C12 35NWS 1998	498.069	S E T RIVET AND ROUND ALUMINUM PLATE IN TOP OF CURB, SOUTHEAST CORNER OF HOLLYWOOD BLVD. AND RUSSELL RD. NEAR THE PC OF HOLLYWOOD BLVD.	34			
22	8C12 26SSW6 1998	496.152	S E T RIVET AND ROUND ALUMINUM PLATE IN TOP OF CURB, NORTHEAST CORNER OF RUSSELL RD. AND STADIUM WAY NEAR THE END OF CURB ON RUSSELL RD.	35			
23				CLARK COUNTY VERTICAL CONTROL v.2003			
24				CLARK COUNTY SURVEYOR'S OFFICE 5051 SOUTH PARADISE ROAD LAS VEGAS, NEVADA 89119 (702) 455-0640		CONVERSION FACTOR: METERS X $\left(\frac{3937}{1200}\right)$ = U.S. SURVEY FEET	
				REVISED 2003	SHEET 2 OF 2	21-62 SE	

FOR REFERENCE ONLY

*2018 BENCHMARK NETWORK ADJUSTMENT SUPERSEDES THE 2003 BENCHMARK BOOK

Township 21 South, Range 62 East
Southwest Quarter



NORTH AMERICAN VERTICAL
DATUM OF 1988
- ALL ELEVATIONS IN METERS -

No.	STATION	ELEVATION (METERS)	DESCRIPTION
1	J 399 1980	511.426	F N D USC&GS STAINLESS STEEL ROD IN WELL SLEEVE, EAST SIDE OF BOULDER HWY. 610' NORTHWEST OF TROPICANA AVE. 2' SOUTH OF POWER POLE #P74648, STAMPED "J399 1980"
2	6C12 28NE6	508.321	F N D RIVET AND SQUARE ALUMINUM PLATE IN TOP OF CURB, SOUTHEAST CORNER OF BOULDER HWY. AND ENGLISH AVE. NEAR THE PC OF BOULDER HWY.
3	6C12 28NEE6	507.547	F N D RIVET AND SQUARE ALUMINUM PLATE IN TOP OF CURB, NORTHEAST CORNER OF BOULDER HWY. AND MISSOURI AVE. NEAR THE PC OF BOULDER HWY.
4	6C12 21SWS	522.048	F N D RIVET AND SQUARE ALUMINUM PLATE IN TOP OF CURB, NORTHEAST CORNER OF TROPICANA AVE. AND NELLIS BLVD. NEAR THE PC OF TROPICANA BLVD.
5			LOST 2003
6	6C12 21W4	521.863	F N D RIVET AND SQUARE ALUMINUM PLATE IN TOP OF CURB, NORTHEAST CORNER OF NELLIS BLVD. AND HARMON AVE. NEAR THE PC OF NELLIS BLVD.
7			LOST 2003
8			LOST 2003
9	6C12 21SSE6	511.719	F N D RIVET AND SQUARE ALUMINUM PLATE IN TOP OF CURB, NORTHWEST CORNER OF TROPICANA AVE. AND BOULDER HWY. NEAR PC OF TROPICANA AVE.
10			LOST 2003
11	6C12 21SSW6	515.526	F N D RIVET AND SQUARE ALUMINUM PLATE IN TOP OF CURB, NORTHEAST CORNER OF TROPICANA AVE. AND MORRIS ST.

CLARK COUNTY VERTICAL CONTROL v.2003

CLARK COUNTY SURVEYOR'S OFFICE
5051 SOUTH PARADISE ROAD
LAS VEGAS, NEVADA 89119
(702) 455-0640

CONVERSION FACTOR:
METERS X $\left(\frac{3937}{1200}\right)$ = U.S. SURVEY FEET

REVISED 2003

SHEET
1 OF 4

21-62
SW

FOR REFERENCE ONLY

***2018 BENCHMARK NETWORK ADJUSTMENT SUPERSEDES THE 2003 BENCHMARK BOOK**

No.	STATION	ELEVATION (METERS)	DESCRIPTION	No.	STATION	ELEVATION (METERS)	DESCRIPTION
12	6C12 20SSE6	529.252	F N D RIVET AND SQUARE ALUMINUM PLATE IN TOP OF CURB, NORTHWEST CORNER OF TROPICANA AVE. AND THE DRIVEWAY INTO 4801 NELLIS BLVD., ON SOUTH SIDE.	25	6C12 29C4	544.479	F N D RIVET AND SQUARE ALUMINUM PLATE IN TOP OF CURB, NORTHEAST CORNER OF MOUNTAIN VISTA ST. AND HACIENDA AVE. NEAR THE PC OF MOUNTAIN VISTA ST.
13	6C12 20S4	536.511	F N D RIVET AND SQUARE ALUMINUM PLATE IN TOP OF CURB, NORTHEAST CORNER OF TROPICANA AVE. AND MOUNTAIN VISTA ST. NEAR THE PC OF TROPICANA AVE.	26	6C12 29N6	538.299	F N D RIVET AND SQUARE ALUMINUM PLATE IN TOP OF CURB, NORTHEAST CORNER OF MOUNTAIN VISTA ST. AND SAN RAFAEL AVE. NEAR THE PC OF MOUNTAIN VISTA ST.
14	6C12 20SSW6	543.340	F N D RIVET AND SQUARE ALUMINUM PLATE IN TOP OF CURB, NORTHEAST CORNER OF TROPICANA AVE. AND PALM ST.	27			LOST 2003
15	6C12 19SES	558.306	F N D RIVET AND SQUARE ALUMINUM PLATE IN TOP OF CURB, NORTH SIDE OF TROPICANA AVE. AND EAST SIDE OF FREEWAY SOUTH BOUND EXIT NEAR THE PC OF TROPICANA AVE.	28	6C12 32SWS	593.154	F N D RIVET AND SQUARE ALUMINUM PLATE IN TOP OF CURB, NORTHEAST CORNER OF SUNSET RD. AND GREEN VALLEY PKWY. NEAR THE PC OF SUNSET RD.
16	6C12 19SSE6	575.011	F N D RIVET AND SQUARE ALUMINUM PLATE IN TOP OF CURB, NORTHEAST CORNER OF TROPICANA AVE. AND ROLLINGWOOD CIR. NEAR THE PC OF TROPICANA AVE.	29	6C12 31SSE6	587.830	F N D RIVET AND SQUARE ALUMINUM PLATE IN TOP OF CURB, NORTHEAST CORNER OF SUNSET RD. AND ANNIE OAKLEY DR. NEAR THE PC OF SUNSET RD.
17	6C12 19S4	584.403	F N D RIVET AND SQUARE ALUMINUM PLATE IN TOP OF CURB, NORTHEAST CORNER OF TROPICANA AVE. AND SANDHILL RD. NEAR THE PC OF TROPICANA AVE.	30	6C12 31S4	590.227	F N D RIVET AND SQUARE ALUMINUM PLATE IN TOP OF CURB, NORTHEAST CORNER OF SUNSET RD. AND SANDHILL RD. NEAR THE PC OF SUNSET RD.
18	6C12 19SSW6	594.154	F N D RIVET AND SQUARE ALUMINUM PLATE IN TOP OF CURB, NORTHEAST CORNER OF TROPICANA AVE. AND PEARL ST. NEAR THE PC OF TROPICANA AVE.	31	6C12 31SSW6	592.419	F N D RIVET AND SQUARE ALUMINUM PLATE IN TOP OF CURB, NORTHEAST CORNER OF SUNSET RD. AND PEARL ST.
19	6C12 19SWS	598.228	F N D RIVET AND SQUARE ALUMINUM PLATE IN TOP OF CURB, NORTHEAST CORNER OF TROPICANA AVE. AND PECOS RD. NEAR THE PC OF TROPICANA AVE.	32	6C12 31SWS	594.077	F N D RIVET AND SQUARE ALUMINUM PLATE IN TOP OF CURB, NORTHEAST CORNER OF SUNSET RD. AND PECOS RD. NEAR THE PC OF SUNSET RD.
20	6C12 32S4	585.456	F N D RIVET AND SQUARE ALUMINUM PLATE IN TOP OF CURB, NORTHEAST CORNER OF SUNSET RD. AND MOUNTAIN VISTA ST. NEAR THE PC OF MOUNTAIN VISTA ST.	33	6C12 19NWW6	582.590	F N D 2" DOME BRASS CAP IN TOP OF CURB, NORTHEAST CORNER OF ROCHELLE AVE. & PECOS RD. NEAR THE PC OF PECOS RD. STAMPED "RLS 5835, 68.06 RM BM 6C12 19NWW6"
21	6C12 32S6	585.763	F N D RIVET AND SQUARE ALUMINUM PLATE IN TOP OF CURB, NORTHEAST CORNER OF MOUNTAIN VISTA ST. AND KELLY AVE. AT EXISTING NORTH END OF CURB.	34			LOST 2003
22	6C12 32C4	584.507	F N D RIVET AND SQUARE ALUMINUM PLATE IN TOP OF CURB, EAST SIDE OF MOUNTAIN VISTA ST. NORTH END OF CURB AT NORTHWEST PROPERTY CORNER FOR 6150 SUNSET RD. 340' SOUTH OF PATRICK LANE.	35	6C12 30NWW6	601.859	F N D 2" DOME BRASS CAP IN TOP OF CURB, NORTHEAST CORNER OF PECOS RD. AND RENO AVE. NEAR THE PC OF PECOS RD. STAMPED "RLS 5835, 64.39 RM BM 6C12 30NWW6"
23			LOST 2003	CLARK COUNTY VERTICAL CONTROL v.2003			
24			LOST 2003	CLARK COUNTY SURVEYOR'S OFFICE 5051 SOUTH PARADISE ROAD LAS VEGAS, NEVADA 89119 (702) 455-0640		CONVERSION FACTOR: METERS X $\left(\frac{3937}{1200}\right)$ = U.S. SURVEY FEET	
				REVISED 2003	SHEET 2 OF 4	21-62 SW	

FOR REFERENCE ONLY

***2018 BENCHMARK NETWORK ADJUSTMENT SUPERSEDES THE 2003 BENCHMARK BOOK**

No.	STATION	ELEVATION (METERS)	DESCRIPTION	No.	STATION	ELEVATION (METERS)	DESCRIPTION
36	6C12 30W4	594.157	F N D 2" DOME BRASS CAP IN TOP OF CURB, NORTHEAST CORNER OF HACIENDA AVE. AND PECOS RD. NEAR THE PC OF PECOS RD. STAMPED "RLS 5835, 72.39 RM BM 6C12 30W4"	49	4C12 30S4	577.520	F N D RIVET AND SQUARE ALUMINUM PLATE IN TOP OF CURB, NORTHWEST CORNER OF RUSSELL RD. AND SANDHILL RD. 20' NORTH OF THE PC OF SANDHILL RD.
37	6C12 19SWW6	592.451	F N D 2" DOME BRASS CAP IN TOP OF CURB, NORTHEAST CORNER OF TOMPKINS AVE AND PECOS RD. NEAR THE PC OF PECOS RD. STAMPED "RLS 5835, 72.64 RM BM 6C12 19SWW6"	50	7C12 31NNW6	583.570	F N D RIVET AND SQUARE ALUMINUM PLATE IN TOP OF CURB, SOUTHEAST CORNER OF RUSSELL RD. AND PEARL ST. NEAR THE PC OF RUSSELL RD.
38	6C12 30SWW6	593.598	F N D 2" DOME BRASS CAP IN TOP OF CURB, NORTHEAST CORNER OF RAWHIDE ST. AND PECOS RD. NEAR THE PC OF PECOS RD. STAMPED "RLS 5835, 59.41 RM BM 6C12 30SWW6"	51	0C12 32NEE6	581.084	F N D RIVET AND SQUARE ALUMINUM PLATE IN TOP OF CURB, NEAR NORTHEAST FENCE CORNER OF VO-TECH SCHOOL BALL FIELDS.
39			LOST 2003	52	WHITNEY #2 1972	581.556	F N D USC&GS BRASS CAP, WHITNEY #2, 1972. LOCATED ON THE TOP OF THE NORTHEAST PORTION OF THE MESA THAT VO-TECH IS ON. ALSO 70' FROM PP #67761NP, (1 OF 3 POWER POLES SET ON WEST EDGE OF MESA).
40	6C12 31NWW6	588.318	F N D 2" DOME BRASS CAP IN TOP OF CURB, NORTHEAST CORNER OF OQUENDO RD. AND PECOS RD. NEAR THE PC OF PECOS RD. STAMPED "RLS 5835, 79.51 RM BM 6C12 31NWW6"	53	4C12 21NNE6	513.289	F N D RIVET AND SQUARE ALUMINUM PLATE IN TOP OF CURB, NORTH SIDE OF FLAMINGO RD. NEAR THE ALIGNMENT OF JIMMY DURANTE BLVD.
41	6C12 31W4	590.232	F N D 2" DOME BRASS CAP IN TOP OF CURB, NORTHEAST CORNER OF PATRICK LANE AND PECOS RD. NEAR THE PC OF PECOS RD. STAMPED "RLS 5835, 74.72 RM BM 6C12 31W4"	54	7C12 20NES 1997	520.520	S E T RIVET AND ROUND ALUMINUM PLATE IN TOP OF CURB, NORTHWEST CORNER OF BOULDER HWY. AND NELLIS BLVD. NEAR THE PC OF BOULDER HWY.
42			LOST 2003	55	8C12 29S6 1998	549.373	S E T RIVET AND ROUND ALUMINUM PLATE IN TOP OF CURB, NORTHEAST CORNER OF MOUNTAIN VISTA ST. AND RAWHIDE ST. NEAR THE PC OF MOUNTAIN VISTA ST.
43	7C12 20S6	531.477	RIVET AND SQUARE ALUMINUM PLATE IN TOP OF CURB, NORTHEAST CORNER OF MOUNTAIN VISTA ST. AND DENNIS WAY. NEAR THE PC OF MOUNTAIN VISTA ST.	56	8C12 32N6 1998	562.047	S E T RIVET AND ROUND ALUMINUM PLATE IN TOP OF CURB, ON EAST SIDE OF CENTERLINE ISLAND ON MOUNTAIN VISTA ST. AT OQUENDO RD. ALIGNMENT.
44	7C12 20C4	530.321	F N D RIVET AND SQUARE ALUMINUM PLATE IN TOP OF CURB, NORTHEAST CORNER OF MOUNTAIN VISTA ST. AND HARMON AVE. NEAR THE PC OF MOUNTAIN VISTA ST.	57	8C12 19W4 1998	590.065	S E T RIVET AND ROUND ALUMINUM PLATE IN TOP OF CURB, NORTHEAST CORNER OF PECOS RD. AND HARMON AVE. NEAR THE PC OF PECOS RD.
45	7C12 20N6	530.469	F N D RIVET AND SQUARE ALUMINUM PLATE IN TOP OF CURB, NORTHEAST CORNER OF MOUNTAIN VISTA ST. AND ROCHELLE AVE. NEAR THE PC OF MOUNTAIN VISTA ST.	58	8C12 31SWW6 1998	592.880	S E T RIVET AND ROUND ALUMINUM PLATE IN TOP OF CURB, NORTHEAST CORNER OF PECOS RD. AND POST RD. NEAR THE PC OF PECOS RD.
46			LOST 2003	59	4C12 31S6	585.892	F N D RIVET AND SQUARE ALUMINUM PLATE IN TOP OF CURB, NORTHEAST CORNER SANDHILL RD. AND POST RD. NEAR THE PC OF SANDHILL RD.
47			LOST 2003	CLARK COUNTY VERTICAL CONTROL v.2003			
48	7C12 31NNE6	573.521	F N D RIVET AND SQUARE ALUMINUM PLATE IN TOP OF CURB, SOUTHEAST CORNER OF RUSSELL RD. AND ANNIE OAKLEY DR. NEAR THE PC OF RUSSELL RD.	CLARK COUNTY SURVEYOR'S OFFICE 5051 SOUTH PARADISE ROAD LAS VEGAS, NEVADA 89119 (702) 455-0640			CONVERSION FACTOR: METERS X $\left(\frac{3937}{1200}\right)$ = U.S. SURVEY FEET
				REVISED 2003	SHEET 3 OF 4	21-62 SW	

FOR REFERENCE ONLY

***2018 BENCHMARK NETWORK ADJUSTMENT SUPERSEDES THE 2003 BENCHMARK BOOK**

No.	STATION	ELEVATION (METERS)	DESCRIPTION	No.	STATION	ELEVATION (METERS)	DESCRIPTION
60	4C12 31C4	583.036	F RIVET AND SQUARE ALUMINUM PLATE IN TOP OF CURB, N NORTHEAST CORNER OF SANDHILL RD. AND PATRICK LN. D NEAR THE PC OF PATRICK LN.	73			
61	2C12 31N6	580.187	F RIVET AND SQUARE ALUMINUM PLATE IN TOP OF CURB, N NORTHEAST CORNER OF SANDHILL RD. AND OQUENDO D RD. NEAR THE PC OF SANDHILL RD.	74			
62	4C12 30S6	576.328	F RIVET AND SQUARE ALUMINUM PLATE IN TOP OF CURB, N NORTHEAST CORNER OF SANDHILL RD. AND RAWHIDE ST. D NEAR THE PC OF SANDHILL RD.	75			
63	4C12 30C4	580.605	F RIVET AND SQUARE ALUMINUM PLATE IN TOP OF CURB, N NORTHEAST CORNER OF SANDHILL RD. AND HACIENDA D AVE. NEAR THE PC OF SANDHILL RD.	76			
64			LOST 2003	77			
65	0C12 29SWS 2000	566.208	S RIVET AND ROUND ALUMINUM PLATE IN TOP OF CURB, E NORTHEAST CORNER OF RUSSELL RD. AND LAMB BLVD. T NEAR THE PC OF RUSSELL RD.	78			
66	0C12 29SSW6 2000	558.200	S RIVET AND ROUND ALUMINUM PLATE IN TOP OF CURB, E NORTHEAST CORNER OF RUSSELL RD. AND PALM AVE. T NEAR THE PC OF RUSSELL RD.	79			
67	0C12 29S4 2000	554.292	S RIVET AND ROUND ALUMINUM PLATE IN TOP OF CURB, E NORTHEAST CORNER OF RUSSELL RD. AND MOUNTAIN T VISTA ST. NEAR THE PC OF MOUNTAIN VISTA ST.	80			
68	0C12 30SWS 2000	590.044	S RIVET AND ROUND ALUMINUM PLATE IN TOP OF CURB, E NORTHEAST CORNER OF RUSSELL RD. AND PECOS RD. T NEAR THE PC OF RUSSELL RD.	81			
69	7C12 21W6 1997	519.834	F RIVET AND ROUND ALUMINUM PLATE IN TOP OF CURB, N NORTHEAST CORNER OF BOULDER HWY. AND HARMON D AVE. NEAR THE PC OF BOULDER HWY.	82			
70				83			
71				CLARK COUNTY VERTICAL CONTROL v.2003			
72				CLARK COUNTY SURVEYOR'S OFFICE 5051 SOUTH PARADISE ROAD LAS VEGAS, NEVADA 89119 (702) 455-0640		CONVERSION FACTOR: METERS X $\left(\frac{3937}{1200}\right)$ = U.S. SURVEY FEET	
				REVISED 2003	SHEET 4 OF 4	21-62 SW	